

JR-2000

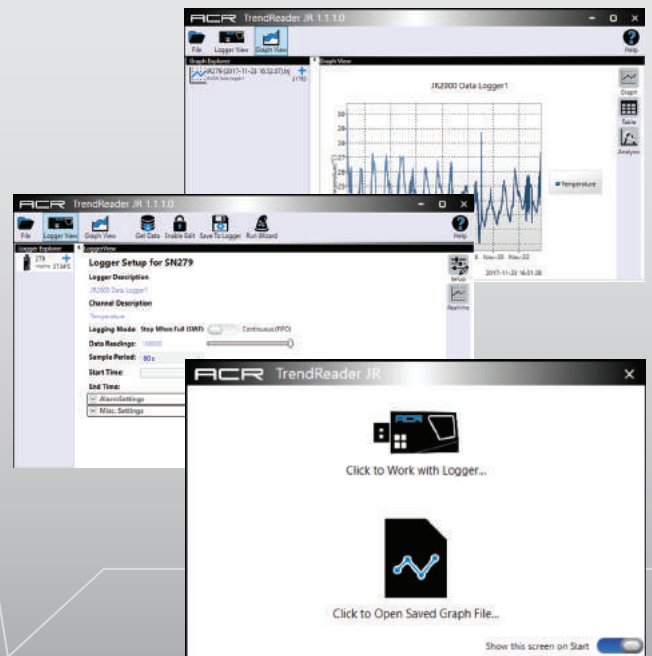
The longest lasting single channel
USB temperature data logger
supporting the widest
temperature range



Introducing the JR-2000 - the next generation of ACR's successful JR-1000 single channel temperature logger now with an easy-to-use USB interface and improved Windows software! The new JR-2000 continues to lead the industry in supported temperature range, battery life, and warranty providing the ideal temperature logging solution for in-building, storage, transport, and environmental monitoring applications across a range of industries. With its precision calibrated internal temperature sensor, simply place the logger in the field and leave it to record. Once the desired data has been gathered, plug the logger into the USB port of your computer to download and view logged data using ACR's TrendReader® Jr software.

FEATURE HIGHLIGHTS

- Widest temperature range (-40°F to 185°F or -40°C to 85°C)
- Longest battery life even at extreme temperatures
- Industry-leading storage size at over 100,000 samples
- Configurable sample rates from every 10 sec. to every 18 hrs.
- Large, multi-color visual status & alarm indicator
- Both ring mount & magnetic mounting options
- Compact, lightweight design that easily fits crowded USB ports
- Easier-than-ever Windows software with configuration wizard
- 3-year warranty



SAMPLE APPLICATIONS

Food process verification, pharmaceutical storage, laboratories, transportation of temperature-sensitive goods, equipment run time monitoring, HVAC system testing and balancing, etc.

PRODUCT SPECIFICATIONS

| | |
|------------------------------|--|
| Size: | 80mm x 30mm x 16mm |
| Weight: | 37 g |
| Connector: | USB Type A |
| Temperature Range: | -40°F to 185°F or -40°C to 85°C |
| Humidity: | 0 to 95% RH (non-condensing) |
| Minimum Battery Life: | 3 years, all temperature conditions |
| Typical Battery Life: | 5+ years, -40°C to 40°C |
| Storage/Memory Size: | 100,000 samples (e.g. 11 days at 10-second samples, 2 months at 1-minute samples) |
| Sample Rates: | Every 10 seconds to every 18 hours |
| Logging Mode: | Stop-When-Full or First-In-First-Out |
| Sample Method: | Average or spot reading |
| Start Delay: | Up to 18 hours |
| Alarm: | High & Low Temperature thresholds, Latched or current value |
| Status Indicator: | Flash every 10 seconds Green = Logging Red = Alarm or Full Blue = Delayed Start |
| Clock Accuracy: | +/- 2 seconds / day |
| Sensor Accuracy: | 0°C to 70°C = +/- 0.2°C < 0°C and >70°C = +/- 0.6°C or better |
| Calibration Period: | 1 year |
| Resolution: | -10°C to 50°C = 0.03°C -35°C to -10°C = 0.1°C or better 50°C to 85°C = 0.1°C or better |
| Mounting: | Multiple mounting options |
| Software: | ACR TrendReader® Jr (compatible with Windows 7, 8 & 10) |



ORDERING INFORMATION

| | |
|-------------------|----------------|
| Item: | JR-2000 |
| Catalog #: | 01-0197 |



ISO 9001 Certified

Rev: 0 - 01/02/18

Contact us today for more information:

Toll Free: 1.800.663.7845 Email: sales@acrsystems.com

acrsystems.com